

Agenda

- Common themes
- Straw man structure
- Questions

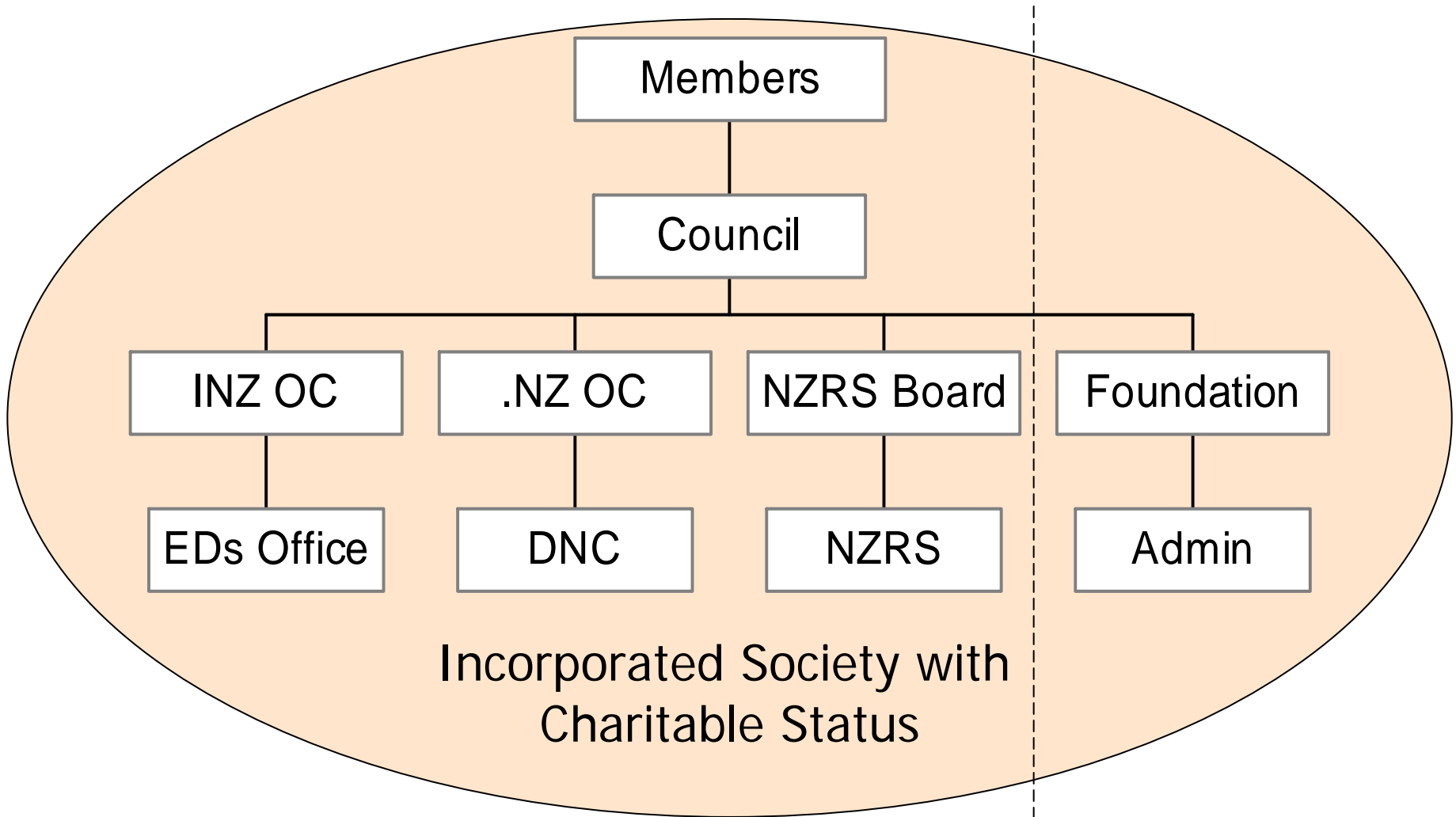
Common Themes

- Democracy and openness rule
- Vigorously independent
- Not commercially or corporately driven
- .nz management is world class
- Some issues with role clarity
- Financially secure (short term), but tax inefficient
- Desire to be more professional
- Relatively unknown by users/beneficiaries
- Low level of membership benefits



“Straw man” approach

A “**straw man**” is a simple draft intended to generate discussion of its disadvantages and to provoke the generation of new and better proposals



Key points

- New committee to oversee ED's office
 - Replacing Executive Committee
 - Replicating success
- Council functions
 - Appoint boards/committees
 - Overall strategic direction
 - Budget approval and monitoring
- Charitable status for the Society
- New charitable Foundation



Questions?

- Issues with broad principles outlined
- Council/Board/Committee sizes & remuneration
- Appointment terms
- Society President or Council Chair?
- Election process for President/Chair
- How could members be better served?
- Should membership be grown? (why/how)

